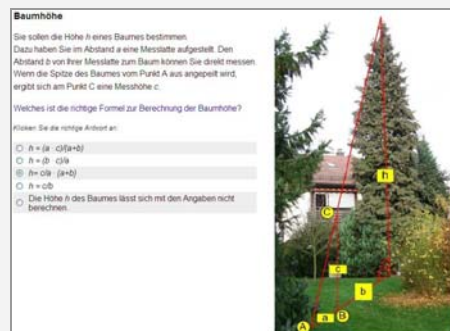
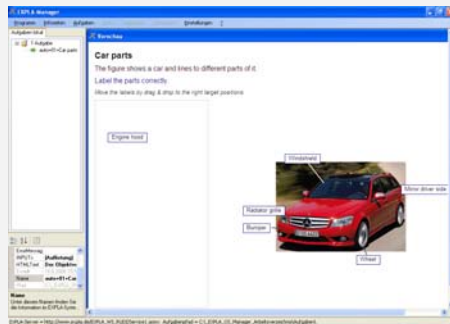
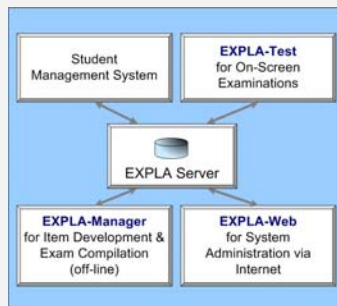


the Examination Platform

for PC-aided foreign worker assessment

EXPLA® is the professional examination platform of Christiani for on-screen examinations.



EXPLA enables...

- o creation of new questions banks structured and tailored to the customer's needs
- o authoring of questions
- o compilation of exams, intermediate tests, and exercises
- o registering examinees in the EXPLA student data base
- o assigning tests or exercises to single examinees and complete classes or groups
- o testing single trainees at any place or whole groups of examinees in a test centre
- o supervision of running tests
- o automatic evaluation of the examinee's responses
- o printing of certificates instantly after the test
- o highest secrecy measures to avoid leaking
- o generating comprehensive and detailed reporting on the outcome of examinations

EXPLA-Manager is the software for the customer to develop test items off-line. Questions, tasks, or information pages for the test can be created without any Internet connection. Comfortable wizards help to enter the items in a correct format. Wizards for many test item types are provided. After the items have been developed, they can be easily uploaded to the EXPLA server.

EXPLA-Test is the software to sit the examinations at the PC. It is programmed as a Smart client.

On-screen examinations can be done on-line and off-line with EXPLA-Test.

The main features of EXPLA-Test are:

- o Software to configure PCs in a class room for a highly secure for on-screen tests.
- o Many different question types are available.
- o Questions can include sound and audio.
- o An examinee will log on for a test, do the test, and finish it.
- o The program sends the examinee's answers instantly to the EXPLA server.
- o The answers of the candidates are evaluated automatically by the software and certificates can be printed immediately.

SERVICES Christiani will:

- o Give you support how to establish a test organization
- o Help to set up Test Centres (hardware and software)
- o Train your test item writers and examination compilers
- o Supply test centres with complete professional tests

Christiani has the largest question bank for technical vocational tests world-wide.